

7210 Neef Dr Manhattan

Updated Home in Keats!

PROPERTY DETAILS



Listing Price: **\$149,900**

Listing: 7210 Neef Dr

Address: Manhattan KS 66506

Bedrooms: 3

Full Baths: 2

Partial Baths: 0

SQ FT: 1786

Lot Size: 0.6 acres

Style: Split Level

Garage: 2 Car

Heat Source: Gas

Schools: USD 378 Riley

QR Code:

On a SmartPhone?
Scan the QR code
to see this listing



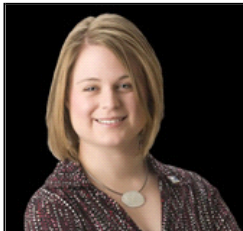
PROPERTY DESCRIPTION

This is an affordable home in Keats (Manhattan, KS). Several updates to include fresh paint, updated light fixtures, updated baths and new carpet in the lower level family room. This home is located on just over a 1/2 acre and features mature trees and an above ground pool. Inside you'll find a separate dining area, large kitchen, mater bedroom with large master bath and family room fireplace. www.NeefDrive.com

CONTACT INFORMATION



Katie Wolf
ERA The Conderman Group
katiewolf.com
1430 Poyntz Ave
Manhattan KS 66502
785.313.2615
785-539-7238
Katie.Wolf@ERA.com



Equal Housing Opportunity

Property information deemed reliable but not guaranteed and should be verified.

Copyright © 2003-2012 Real Pro Systems LLC. All rights reserved.