

5746 Elbo Bluff Manhattan

Lake Community Home with 30 x 40 Shop!

PROPERTY DETAILS



Listing Price: **\$135,000**

Listing 5746 Elbo Bluff

Address: Manhattan KS 66502

Bedrooms: 2

Full Baths: 1

Partial Baths: 0

SQ FT: 2308

Lot Size: 0.3 acres

Style: Raised Ranch

Garage: 2 Car+

Heat Source: Gas

Schools: USD 383 Manhattan

QR Code:

On a SmartPhone?
Scan the QR code
to see this listing



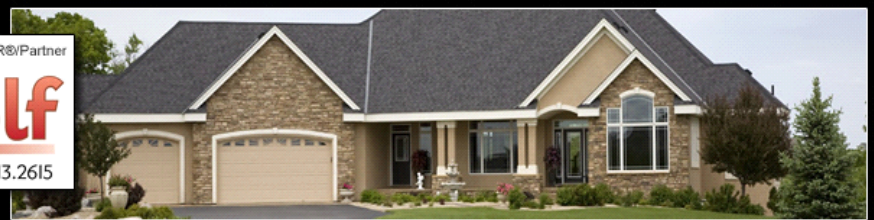
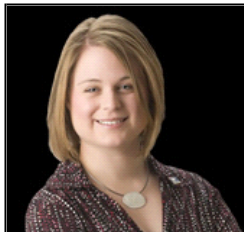
PROPERTY DESCRIPTION

Enjoy living in this private lake community! This 2 Bedroom (1 non-conforming) Lake Elbo home sits on 2 wooded lots. Large main level living room, comfortable lower level family room and even a sitting area provide ample living space throughout this home. Enjoy wood heat to save on utility bills (furnace too). Outside is a 30 x 40 shop with oversized door and storage deck. 6 Additional Lots are available for \$20,000 Providing great views, blackberry trees & privacy! Sell off or keep for your own enjoyment...great fire pit and trails throughout. www.LakeElbo.com

CONTACT INFORMATION



Katie Wolf
ERA The Conderman Group
katiewolf.com
1430 Poyntz Ave
Manhattan KS 66502
785.313.2615
785-539-7238
Katie.Wolf@ERA.com



Equal Housing Opportunity

Property information deemed reliable but not guaranteed and should be verified.

Copyright © 2003-2012 Real Pro Systems LLC. All rights reserved.