

5100 Pine Lane Wamego

Country Living at an Affordable Price!

PROPERTY DETAILS



Listing Price: **\$155,000**

Listing Address: 5100 Pine Lane

Wamego KS 66547

Bedrooms: 4

Full Baths: 1

Partial Baths: 1

SQ FT: 2016

Lot Size: 0.9 acres

Style: Raised Ranch

Garage: 2 Car

Heat Source: Gas

Schools: USD 320 Wamego

QR Code:

On a SmartPhone?
Scan the QR code
to see this listing



PROPERTY DESCRIPTION

Perfect country setting on just under an acre, complete with a 30 x 50 shop! The home has numerous recent improvements to include new siding, new windows, new patio, fresh paint, new sheet rock and more! The living room is open to the dining area by way of french doors. All kitchen appliances stay and include refrigerator, double wall oven and gas stove top. You'll love relaxing on the large deck!

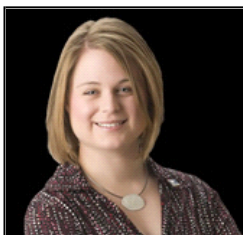
The master bedroom features coffered ceilings and 1/2 bath. The lower level offers a spacious family room that walks out to the new back patio. Also, in the lower level is a finished storage area, large enough for an office as well as a 4th, non-conforming bedroom and laundry room. The lot is privately surrounded by mature trees and shrubbery, has plenty of open space and established landscaping.

Visit: www.5100Pine.com for more!

CONTACT INFORMATION



Katie Wolf
ERA The Conderman Group
katiewolf.com
1430 Poyntz Ave
Manhattan KS 66502
785.313.2615
785-539-7238
Katie.Wolf@ERA.com



Equal Housing Opportunity

Property information deemed reliable but not guaranteed and should be verified.

Copyright © 2003-2012 Real Pro Systems LLC. All rights reserved.

