

4900 Top Notch Rd Wamego

Gobs of Space on Just Over 3.5 Acres!

PROPERTY DETAILS



Listing Price: **\$239,900**
Listing Address: 4900 Top Notch Rd
Wamego KS 66547
Bedrooms: 4
Full Baths: 3
Partial Baths: 0
SQ FT: 3752
Lot Size: 3.59 acres
Style: Ranch
Garage: 2 Car
Heat Source: Gas
Schools: USD 323 Rock Creek

QR Code:
On a SmartPhone?
Scan the QR code
to see this listing



PROPERTY DESCRIPTION

Gobs of finished square footage in this energy efficient home. Wide open floor plan greets you at the door. Spacious kitchen offers an abundance of cabinetry, custom tile backsplash and eating bar. A bonus room off of the living room could be arranged for formal dining, office, play area or sun room! A large master bedroom offers his & her closets, a spacious master bath with double vanity, jetted tub and separate shower. The walkout basement offers even more finished space complete with family room, rec area, 4th bedroom and 3rd bathroom. Unfinished space is available for the addition of 2 future bedrooms. Sitting on just over 3 1/2 acres them home has much to offer!

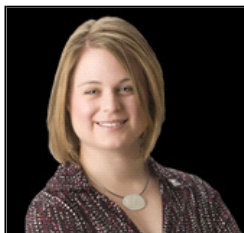
Located in the nationally award winning Rock Creek School District with convenient access to both Manhattan and Wamego.

Visit www.4900TopNotch.com for more information.

CONTACT INFORMATION



Katie Wolf
ERA The Conderman Group
katiewolf.com
1430 Poyntz Ave
Manhattan KS 66502
785.313.2615
785-539-7238
Katie.Wolf@ERA.com



Equal Housing Opportunity

Property information deemed reliable but not guaranteed and should be verified.

Copyright © 2003-2012 Real Pro Systems LLC. All rights reserved.