

# 4020 Franklin Drive St. George

Peaceful Country Setting Convenient to Town

## PROPERTY DETAILS



**Listing Price:** **\$174,500**

**Listing Address:** 4020 Franklin Drive

St. George KS 66535

**Bedrooms:** 3

**Full Baths:** 2

**Partial Baths:** 0

**SQ FT:** 2288

**Lot Size:** 1.7 acres

**Style:** Ranch

**Garage:** 2 Car

**Heat Source:** Electric

**Schools:** USD 323 Rock Creek

**QR Code:**

On a SmartPhone?  
Scan the QR code  
to see this listing



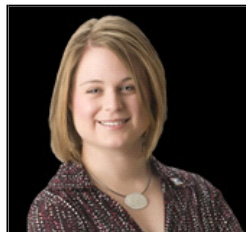
## PROPERTY DESCRIPTION

Well kept ranch on 1.7 acres with numerous updates and only 1/4 mile from Highway 24. Partial finished walkout lower level with corner fireplace, bathroom and additional space for future finish. The main floor kitchen and dining area have new laminate flooring, plenty of cabinetry and access to the relaxing deck which also offers enclosed storage beneath. The main floor bathroom features a double vanity and shower/tub combo. There is plenty of room to roam and the setting offers peaceful country living! Coming soon to the area is the new St. George Elementary school. Move just in time for your kids to get enrolled. Call for your private showing today! 785-313-2615 [www.4020Franklin.com](http://www.4020Franklin.com)

## CONTACT INFORMATION



**Katie Wolf**  
**ERA The Conderman Group**  
**[katiewolf.com](http://katiewolf.com)**  
1430 Poyntz Ave  
Manhattan KS 66502  
785.313.2615  
785-539-7238  
[Katie.Wolf@ERA.com](mailto:Katie.Wolf@ERA.com)



**Equal Housing Opportunity**

Property information deemed reliable but not guaranteed and should be verified.

Copyright © 2003-2012 Real Pro Systems LLC. All rights reserved.