

2023 Sunnymeade Rd Manhattan

Newer 4 Bedroom Home, Close to University!

PROPERTY DETAILS



Listing Price: **\$249,900**

Listing Address: 2023 Sunnymeade Rd
Manhattan KS 66502

Bedrooms: 4

Full Baths: 3

Partial Baths: 0

SQ FT: 2794

Lot Size: 0.4 acres

Style: Ranch

Garage: 2 Car

Heat Source: Gas

Schools: USD 383 Manhattan -
Marlatt Elementary

QR Code:

On a SmartPhone?
Scan the QR code
to see this listing



PROPERTY DESCRIPTION

Fantastic 4 bedroom ranch within walking distance to the KSU football stadium, yet tucked away in a private neighborhood. Custom built in 2001 this home offers vaulted ceilings, open floorplan, sound system, large pantry, full finished basement, amazing wet bar/island, storage, instant hot water, large back yard and more!

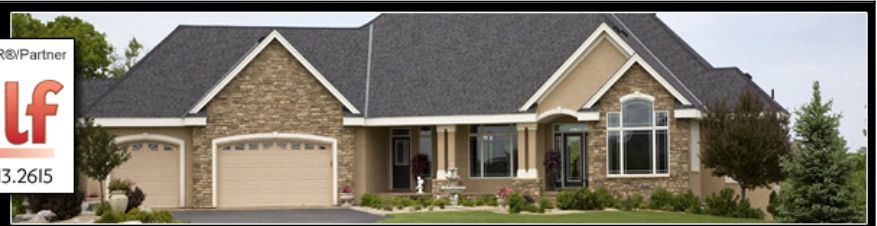
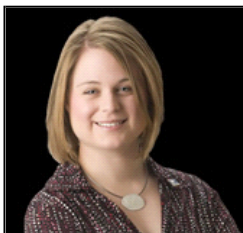
The HVAC system includes 4 zones that include the garage, mainfloor bedrooms, mainfloor and basement. A 50 gallon Bryant instant hot water heater and laundry room with utility sink are a couple more of the convenient extras found in this home.

www.2023Sunnymeade.com

CONTACT INFORMATION



Katie Wolf
ERA The Conderman Group
katiewolf.com
1430 Poyntz Ave
Manhattan KS 66502
785.313.2615
785-539-7238
Katie.Wolf@ERA.com



Equal Housing Opportunity

Property information deemed reliable but not guaranteed and should be verified.

Copyright © 2003-2012 Real Pro Systems LLC. All rights reserved.