

1927 Lilac Lane Manhattan

Finished Basement and Fenced Back Yard!

PROPERTY DETAILS



Listing Price: **\$148,900**
Listing Address: 1927 Lilac Lane
Manhattan KS 66502
Bedrooms: 4
Full Baths: 3
Partial Baths: 0
SQ FT: 2288
Lot Size: 0.17 acre
Style: Ranch
Garage: 1 Car
Heat Source: Gas
Schools: USD 383 Manhattan

QR Code:
On a SmartPhone?
Scan the QR code
to see this listing



PROPERTY DESCRIPTION

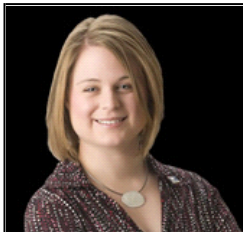
Great price for the finished square footage! In addition to 2 mainfloor bedrooms there are 2 non-conforming rooms in the basement. This home also offers a formal dining room, eat-in kitchen and spacious lower level family room! Amenities include kitchen pantry, mainfloor laundry, fireplace, all kitchen appliances and numerous updates! A large fenced back yard is a nice retreat with mature trees providing ample shade.

Visit www.1927Lilac.com for more information!

CONTACT INFORMATION



Katie Wolf
ERA The Conderman Group
katiewolf.com
1430 Poyntz Ave
Manhattan KS 66502
785.313.2615
785-539-7238
Katie.Wolf@ERA.com



Equal Housing Opportunity

Property information deemed reliable but not guaranteed and should be verified.

Copyright © 2003-2012 Real Pro Systems LLC. All rights reserved.