

1009 Laussac Dr Manhattan

Lee Mill Heights 4 - Hurry Homes Selling Fast!

PROPERTY DETAILS



Listing Price: **\$289,500**
Listing Address: 1009 Laussac Dr
Manhattan KS 66503
Bedrooms: 3
Full Baths: 2
Partial Baths: 1
SQ FT: 3336
Lot Size: 13379 sq ft
Style: Walkout Ranch
Garage: 3 Car
Heat Source: Gas
Schools: USD 383 Manhattan

QR Code:
On a SmartPhone?
Scan the QR code
to see this listing



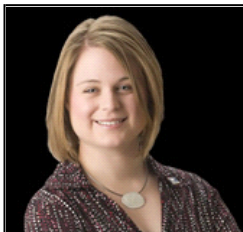
PROPERTY DESCRIPTION

Professionally Designed Interior! Beautiful Crown Molding, Wide Base Trim Throughout, Hand-scraped Wood Floors, Granite Kitchen Countertops, Stainless Steel Appliances, Raised Panel Cabinets, 9 Foot Basement Ceilings, Cedar Deck with Composite Floor & Metal Balusters. Large, lower level finished family room and 1/2 bath. Master bath with double vanity, tiled shower and walk-in closet. Vaulted ceilings, spacious with great natural light as well as room to grow! Also an Energy Star Rated home providing efficient living! Complete with the finest materials, amenities and finishes available...it'll be a beauty! Visit www.Laussac.com for more!

CONTACT INFORMATION



Katie Wolf
ERA The Conderman Group
katiewolf.com
1430 Poyntz Ave
Manhattan KS 66502
785.313.2615
785-539-7238
Katie.Wolf@ERA.com



Equal Housing Opportunity

Property information deemed reliable but not guaranteed and should be verified.

Copyright © 2003-2012 Real Pro Systems LLC. All rights reserved.